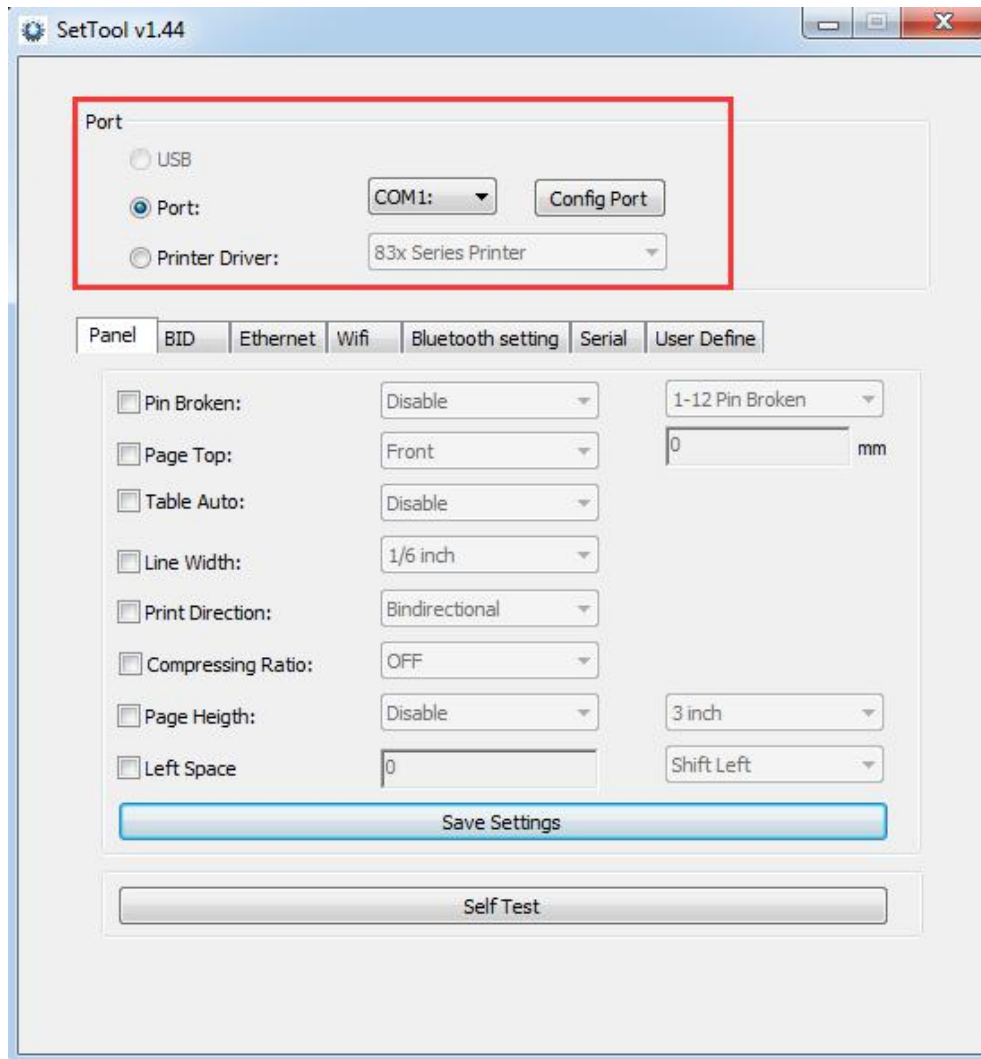


---

# SetTool UserManual

## I. Connect the printer.

Double-click the tool “SetTool”, pop up the following interface.



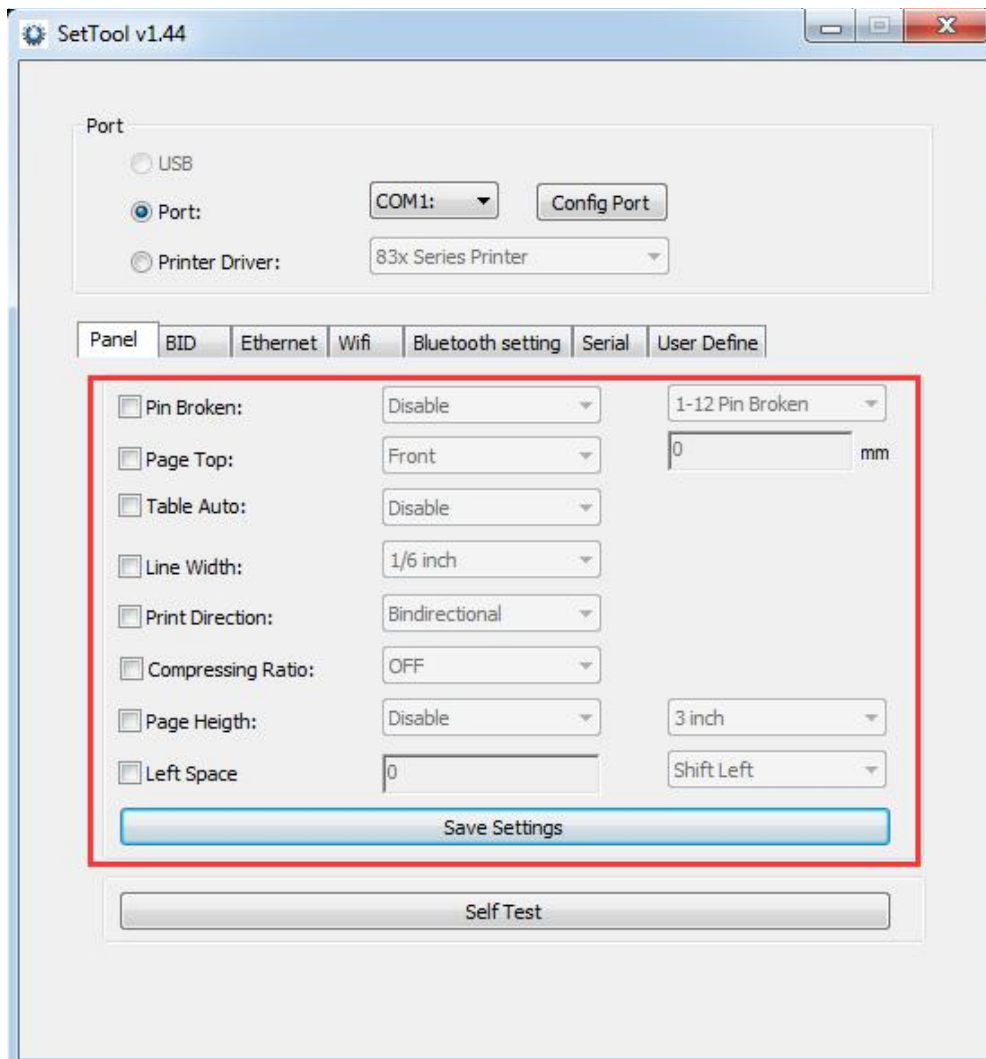
As shown in the above, there are three kinds of ways, to connect to the printer.

1. If the printer connect the USB cable, then choose the USB directly, then the printer Settings accordingly.( USB has the function of automatic identification, if connect the USB cable and the USB is in the optional position, if there is no connect USB cable, the USB option appears gray state, unable to choose).
2. Through parallel port to connect a printer, select the "port", then selects the corresponding parallel port, after "configure port", can be carried out on the printer Settings.

- 
- Through the print driver to connect, the first to make sure the computer is installed Printer driver, if installed, you have to be parallel port Settings in the drive before, then in the setting tool "print driver" drop-down options in driven can be carried out on the Printer Settings.

## II. Set the function

### Panel



As shown in the above, a total of seven set function

- Pin Broken

To determine whether a printer breakage: lack of paper button + power button hold on together, then put a piece of paper to start to print the Selftest, the Selfteston page have a row of Numbers 1-24 needle, Which number under no horizontal lines represent the needle is broken.

---

If you found the needle broken when printed, it can be set by “Pin broken”.

2. Page Top

It can set the distance between the starting position of the printing and the top of page. Set values range from 0 to 360”.

3. Table Auto

When this function is opened, the printer take turns to use the different print needle to print out the form, in order to prevent printing needles is damaged.(this function is only for instruction mode, do not apply to the graphics mode)

4. Line Width

It can set printer line feed amount to “a third of an inch, 1/6 of an inch, 1/8 of an inch, 1/12”.

5. Print Direction

It can set to print direction for the “one-way” and “two-way”.

6. Compressing Ratio

The printer's compression ratio can be set according to user's needs, such as "80" "75" "60" "50" and so on. The printer will compress the data according to the compression ratio. Compression function is off by default.

7. Page Height

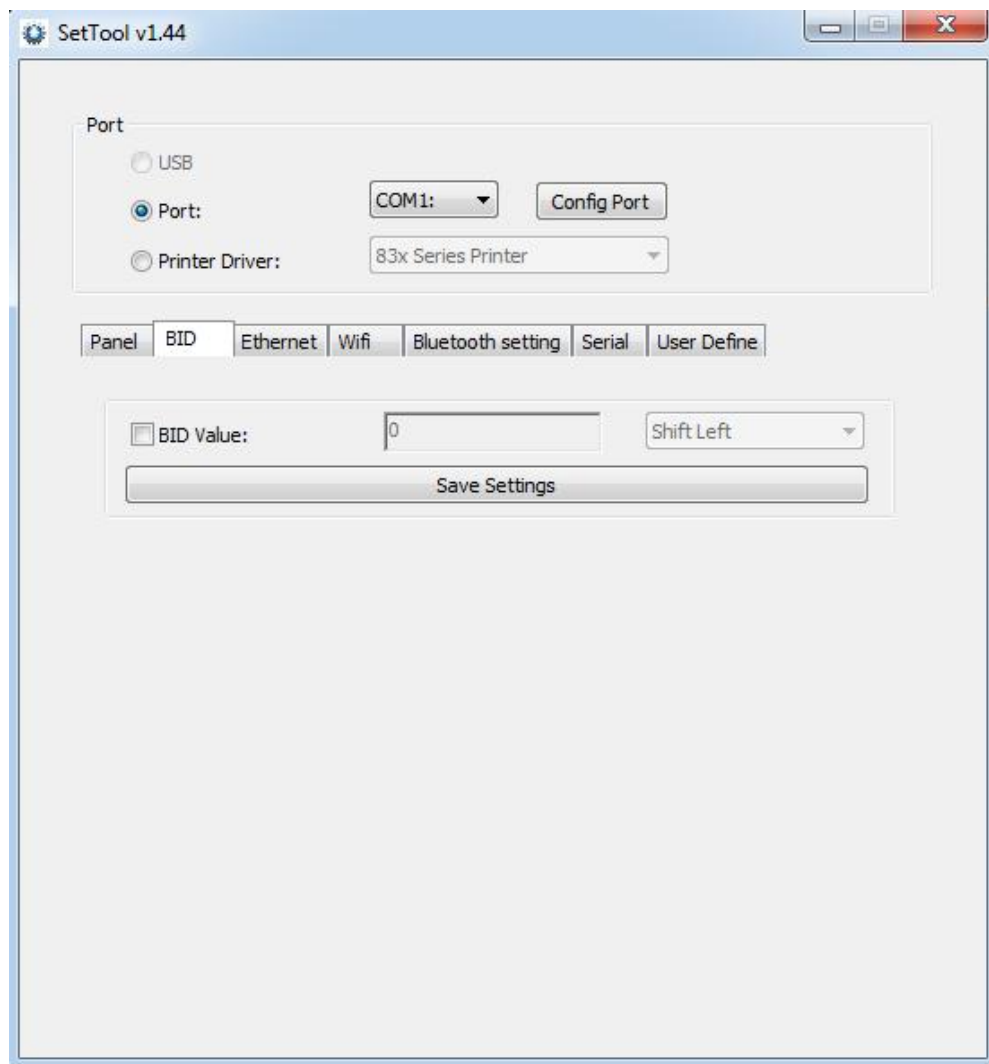
It can set the maximum length of printing paper to “5”, “5.5”, “11”, “11.6 inches (A4)”.

8. Left Space

You can adjust the position of the paper to the left or right.

---

## BID Value



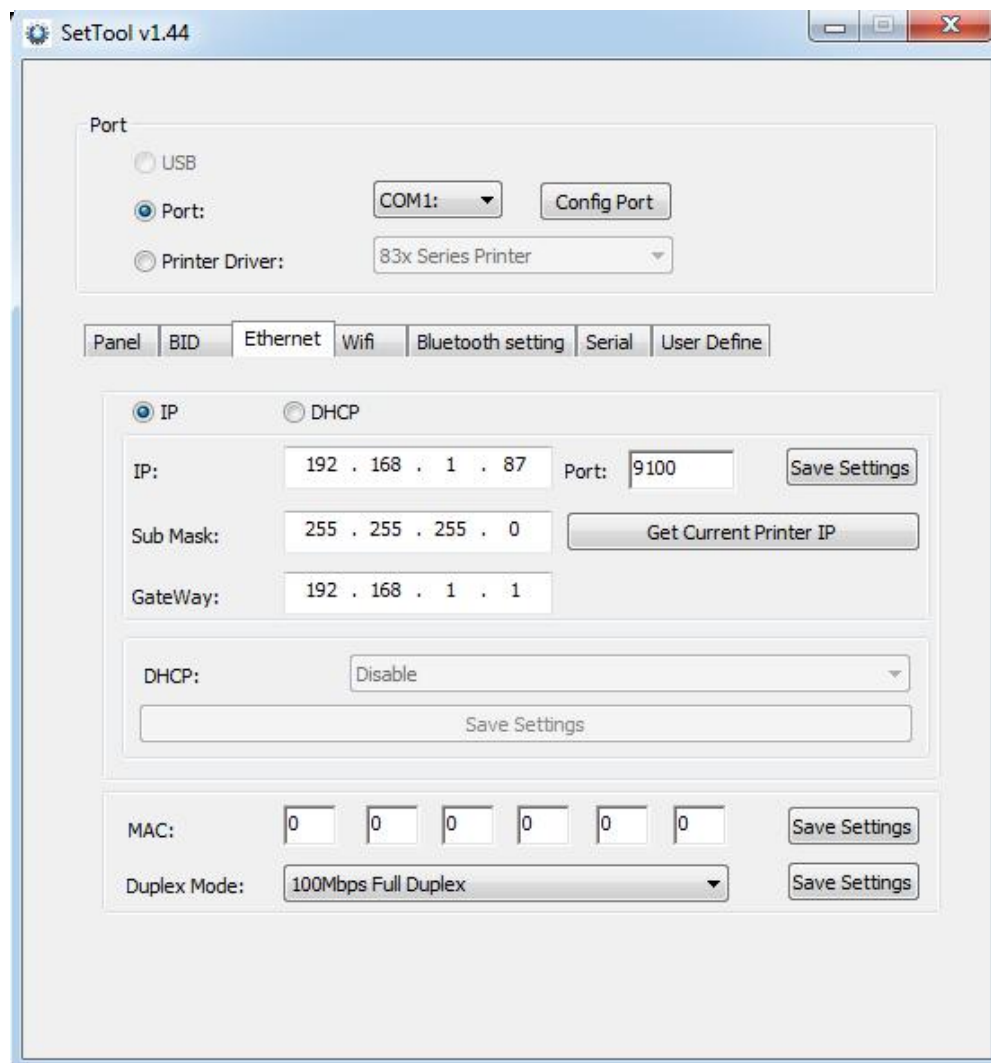
If found that when the printed text or table vertical direction is not aligned, you can adjust by setting the BID value, the BID value set in the range of 0 to 16.

When setting is completed, we can check the Selftest to determine whether set up successfully.

---

## Ethernet

1. Set the IP address of the printer, change to "192.168.1.87", and set up the communication port.
2. Set the subnet mask of the printer, change to "255.255.255.0".
3. Set the printer gateway to "192.168.1.1".
4. Set the printer function of DHCP, the DHCP default printer is closed, if you need to open, let the printer automatically obtain an IP address.
5. Set the MAC address, and the network transmission rate of setting.



Note: If the printer connection is either “Ethernet” or “IP of printer drivers” before setting website, the IP is changed. At that time, the printer and the tool has been disconnected. Resetting IP of the tool is needed for the connection. Other connection ways are unaffected.

---

## WIFI

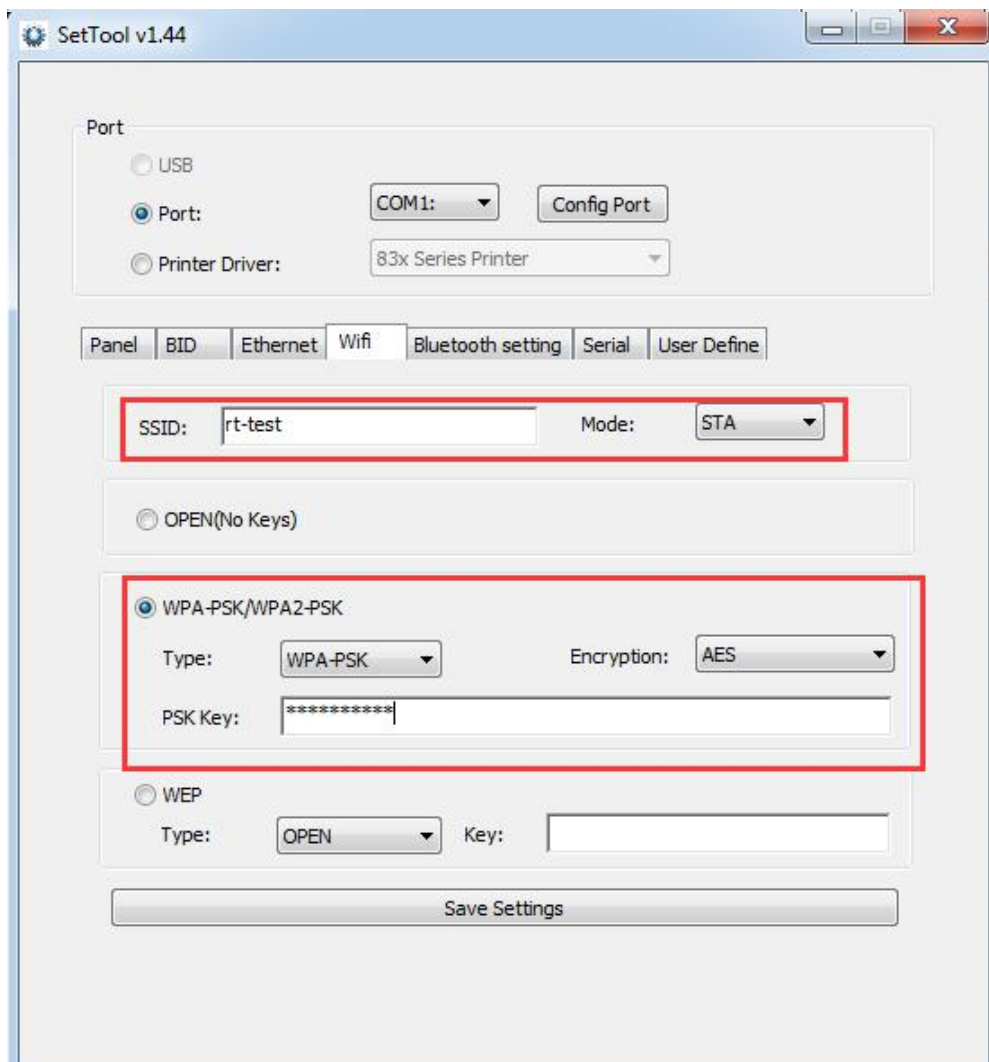
1.The custom router's wireless settings SSID name, that is, the name of the wireless router.

2.Wireless network security settings.

(1) Can be used "do not open wireless security";

(2) For encryption, it is recommended to use the WPA-PSK/WPA2-PSK method, the authentication type can choose "automatic", "WPA-PSK", "WPA2-PSK" one of them, and the encryption algorithm proposed using AES.PSK password can be defined by its own settings.

(3) Wireless network security settings, you can also use WEP type, the type is not recommended. Must be such as using this type of certification, the certification type can choose "automatic", "open system", "shared key" one, the WEP key format, please choose "ASCII", passwords can be custom input.



---

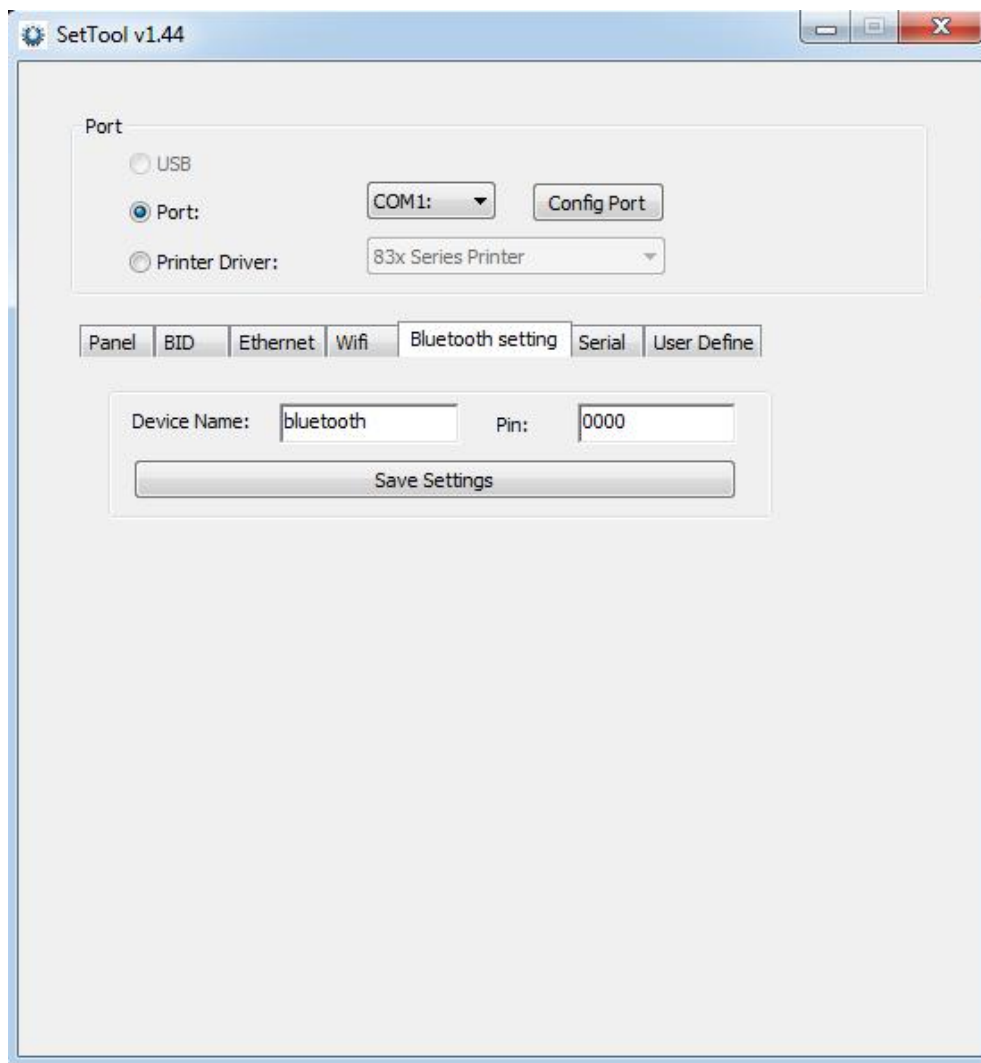
User can confirm the WIFI connection by the light flicker on the control panel

Lights status on the panel:



- a. The light of "Power/WIFI" keeps on if WIFI connects successfully;
- b. The light of "Power/WIFI" flashes if WIFI connects fail.

### Bluetooth Settings



If the printer has a Bluetooth function, you can set the parameters of Bluetooth.

1. First hold printer form feed, referred to as the "feed" button, and then boot, print a self-test screen printer. From the self-test page, find out Bluetooth printer

---

name and password pairs.

2 if there is a need, you can modify the Bluetooth pairing name and password, this time you need to use an integrated set of tools in the Bluetooth settings function, as shown below.

3 input printer Bluetooth to modify the device name and Pin, click the settings, the printer to restart, change the settings successfully.

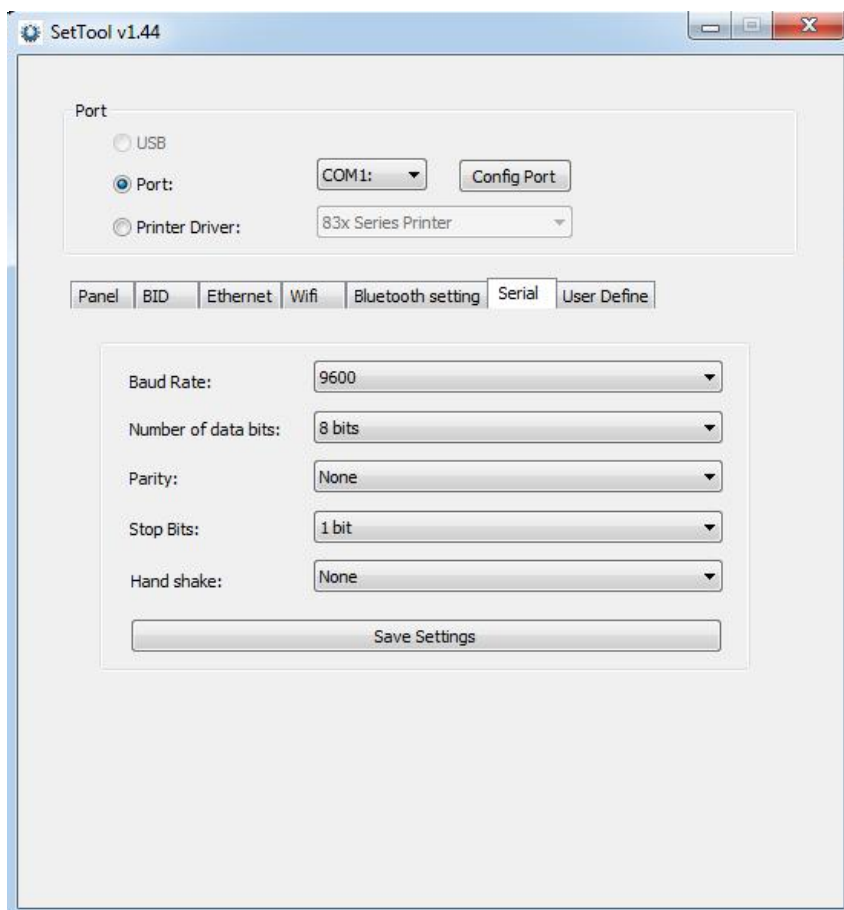
4 open the main device, search the external Bluetooth device

5 to find just modify the Bluetooth printer; enter the corresponding password to complete the pairing.

When matching, the thermal micro printer must be in the boot state.

Note: when pairing, please do not turn on multiple printers at the same time, or you may not be able to determine which printer is successful.

### Serial port settings

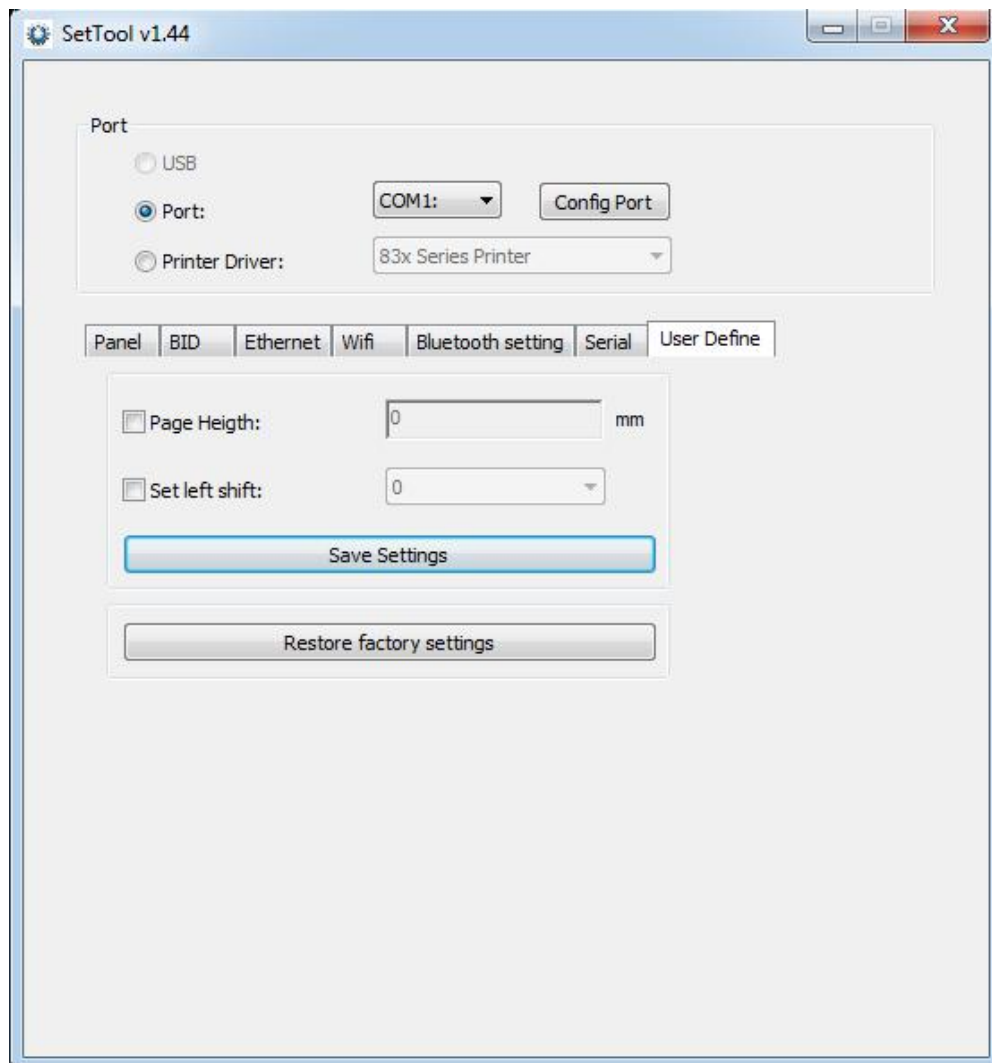


**Notice:** After serial port setting, the parameter is changed. You need to go back to main page to reset the parameter.



---

## User Define



1. For the page length setting, the user can enter the corresponding page length according to their needs and then click "set" to complete it.
2. "Factory Reset", this setting is used to restore factory settings.